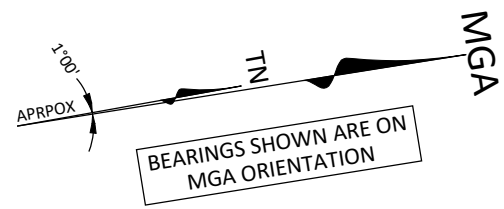


A1

SCHEDULE OF SURVEY MARKS				
GROUND COORDINATES ON MGA2020 ORIENTATION				
NO.	MARK	EASTING	NORTHING	RL (AHD)
S1	PM27710 IN BOX - ORIGIN	392870.419	6376967.041	13.178
S2	GI NAIL & WASH IN KERB	392852.955	6376875.77	14.34
S3	SSM46997 ON KERB	392814.784	6376637.007	14.25
S4	GI NAIL & WASH IN KERB	392805.638	6376579.696	14.035
S5	GI NAIL & WASH IN KERB	392742.277	6376998.004	14.855



SEE SHEET 4

SEE SHEET 7

SEE SHEET 10

SEE SHEET 3

SEE SHEET 6

SEE SHEET 9

SEE SHEET 2

SEE SHEET 5

SEE SHEET 8

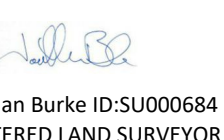
SEE SHEETS 2-10 FOR DETAILS

SEE SHEET 10 FOR TREE & UNDERGROUND SERVICES TABLES



Schedule of Easements & Restrictions	
No.	Description
(A)	EASEMENT FOR TRANSMISSION LINE (J892295)
(B)	RESTRICTION(S) ON THE USE OF LAND (DP788451)

ISSUE	DATE	AMENDMENT	SURV	CHK
A	05/06/24	ORIGINAL ISSUE	GS	JB



SDG Pty Ltd  
abn 85 213 523 621  
Suite 1, 3 Railway Street, Baulkham Hills NSW 2153  
t: (02) 9630 7955 w: sdg.net.au  
Liability limited by a scheme approved under Professional Standards Legislation

GENERAL NOTES

ONLY TREES GREATER THAN 3.5 METRES IN HEIGHT ARE SHOWN ON THIS PLAN. TREE POSITIONS ARE DIAGRAMMATIC ONLY AND MAY REQUIRE ADDITIONAL SURVEY WHERE CRITICAL TO DESIGN.

CONTOURS ARE INDICATIVE AT GROUND FORM ONLY. SPOT LEVELS ONLY SHOULD BE USED FOR CALCULATIONS OF QUANTITIES WITH CAUTION.

LEVELS ARE ON AUSTRALIAN HEIGHT DATUM (AHD).

BOUNDARY NOTES

THE BOUNDARIES OF THE LAND HAVE BEEN SURVEYED. UNLESS SHOWN OTHERWISE BOUNDARY DIMENSIONS ARE BY TITLE DIAGRAM DP788451.

BOUNDARIES HAVE NOT BEEN MARKED.

SURVEY INFORMATION NOTES

THE ORIGIN OF COORDINATES COMES FROM PM 27710 E392870.419 N6376967.041 CLASS B POSITIONAL UNCERTAINTY (PU) 0.02 (MGA2020) ADOPTED FROM SCIMS DATED 27/05/2024.

THE ORIGIN OF LEVELS COMES FROM PM 27710 RL13.178 CLASS 1C POSITIONAL UNCERTAINTY (PU) 0.04 ADOPTED FROM SCIMS DATED 27/05/2024.

THE ORIENTATION OF THIS PLAN IS MGA NORTH DETERMINED FROM DP127905.

CERTIFICATE OF TITLE NOTES

THE FOLLOWING INFORMATION RELATES TO THE CERTIFICATE OF TITLE(CT) OF THE SUBJECT LOT:

- LOT 3 IN DP788451  
(CT EDITION 5 DATED 06/12/2023 SEARCH DATE 02/02/2024)

- AFFECTED BY:  
- EASEMENT FOR TRANSMISSION LINE (J892295)  
- EASEMENT (J892295) VESTED IN SHORTLAND ELECTRICITY (Q332380)  
- RESTRICTION ON THE USE OF LAND (DP788451)

EASEMENTS AND RESTRICTIONS NOTED ON THE TITLE HAVE NOT BEEN INVESTIGATED. THESE SHOULD BE INVESTIGATED PRIOR TO DETERMINE TO ENSURE ANY FUTURE DEVELOPMENT COMPLIES.

SERVICES NOTES

ONLY THOSE SERVICES VISIBLE AT THE TIME OF SURVEY HAVE BEEN LOCATED AND ARE QUALITY LEVEL A AS DEFINED BY AS 5488.1:2019.

UNDERGROUND SERVICES HAVE BEEN LOCATED BY ONPOINT LOCATING ON 05/06/2024 USING EQUIPMENT AS NOTED IN REPORT PROVIDED. THE SERVICE POSITION IS SHOWN ON THE PLAN AND THEIR RESPECTIVE DEPTH AND QUALITY ARE AS STATED IN THE TABLE.

ALL RELEVANT AUTHORITIES MUST BE CONTACTED TO DETERMINE THE FULL EXTENT OF SERVICES PRIOR TO ANY PLANNING OR WORKS NEAR THE SITE.

UNDERGROUND SERVICES LEGEND

QUALITY LEVEL B (AS 5488.1:2019)

W	POTABLE WATER MAIN
D	STORMWATER PIPE
S	SEWER MAIN
C	COMMUNICATIONS CABLES
W	OVERHEAD WIRES

CAUTION: FIBRE OPTIC CABLES ARE PRESENT IN THIS AREA

SERVICES NOTES:

- ONLY THOSE SERVICES VISIBLE AT THE TIME OF SURVEY HAVE BEEN LOCATED AND IF SHOWN AS "A" ARE QUALITY LEVEL A AS DEFINED BY AS 5488.1:2019. LEVELS SHOWN ARE SURFACE LEVELS UNLESS NOTED OTHERWISE.
- UNDERGROUND SERVICES HAVE BEEN LOCATED FOR POSITION AND DEPTH UTILISING REMOTE SENSING EQUIPMENT BY ONPOINT LOCATING ON 05/06/2024. ALL RELEVANT AUTHORITIES MUST BE CONTACTED TO DETERMINE THE FULL EXTENT OF SERVICES PRIOR TO ANY PLANNING OR WORKS NEAR THE SITE.

LEGEND

TAG	DESCRIPTION	TAG	DESCRIPTION
COM	COMMUNICATIONS PIT	PP	POWER POLE
CULV	PIPED CULVERT	SEW	SEWER VACUUM LINE BOX
GR	GRATE	SS	STREET SIGN
HYD	HYDRANT	SV	STOP VALVE
EB	EDGE OF BITUMEN	MW	MONITORING WELL
TK	TOP OF KERB	TB	TOP OF BANK
GUT	GUTTER OF KERB	BB	BOTTOM OF BANK
LIP	LIP OF KERB	VC	VEHICLE CROSSING
LP	LIGHT POLE	WM	WATER METER
LM	ROAD LINE MARKING		
PC	PEDESTRIAN CROSSING		

© COPYRIGHT

THIS PLAN IS NOT TO BE USED FOR ANY PURPOSE OTHER THAN ITS ORIGINAL INTENTION AND REMAINS THE PROPERTY OF SDG. THIS PLAN CANNOT BE REPRODUCED, COPIED OR DIGITALLY TRANSFERRED (IN WHOLE OR PART) WITHOUT PRIOR WRITTEN PERMISSION OF SDG.

PROJECT:

DETAIL AND LEVEL SURVEY OF  
LOT 3 IN DP 788451

No.6 ABUNDANCE ROAD  
MEDOWIE

CLIENT: School Infrastructure NSW

FILE: DDWO0575523 - Medowie High School Abundance  
Road SDG Pty Ltd.dwg

LGA: PORT STEPHENS

REF: 9106

ISSUE: A

SURVEY DATE: 05/06/2024

SCALE: 1:600

CONTOURS: 0.5m

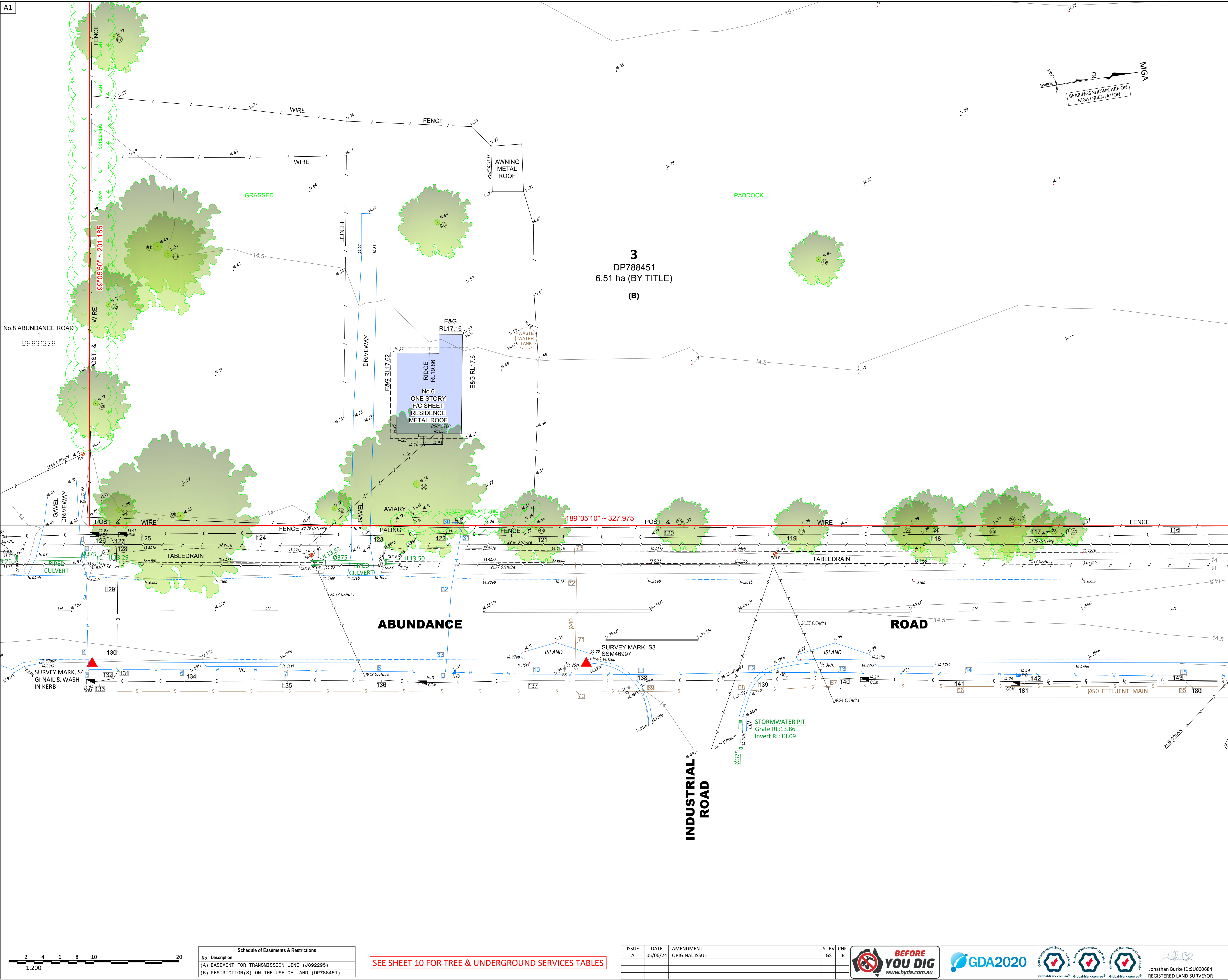
DATUM: AHD

AZIMUTH: MGA2020

SHEET 1 OF 10



A1



**GENERAL NOTES**

ONLY TREES GREATER THAN 3.5 METRES IN HEIGHT ARE SHOWN ON THIS PLAN. TREE POSITIONS ARE DIAGRAMMATIC ONLY AND MAY REQUIRE ADDITIONAL SURVEY WHERE CRITICAL TO DESIGN.

CONTOURS ARE INDICATIVE AT GROUND FORM ONLY. SPOT LEVELS ONLY SHOULD BE USED FOR CALCULATIONS OF QUANTITIES WITH CAUTION.

LEVELS ARE ON AUSTRALIAN HEIGHT DATUM (AHD).

**BOUNDARY NOTES**

THE BOUNDARIES OF THE LAND HAVE BEEN SURVEYED. UNLESS SHOWN OTHERWISE BOUNDARY DIMENSIONS ARE BY TITLE DIAGRAM DP788451.

BOUNDARIES HAVE NOT BEEN MARKED.

**SURVEY INFORMATION NOTES**

THE ORIGIN OF COORDINATES COMES FROM PM 27710 E392870.419 N6376967.041 CLASS B POSITIONAL UNCERTAINTY (PU) 0.02 (MGA2020) ADOPTED FROM SCIMS DATED 27/05/2024.

THE ORIGIN OF LEVELS COMES FROM PM 27710 RL13.178 CLASS LC POSITIONAL UNCERTAINTY (PU) 0.04 ADOPTED FROM SCIMS DATED 27/05/2024.

THE ORIENTATION OF THIS PLAN IS MGA NORTH DETERMINED FROM DP1279705.

**CERTIFICATE OF TITLE NOTES**

THE FOLLOWING INFORMATION RELATES TO THE CERTIFICATE OF TITLE(CT) OF THE SUBJECT LOT:

- LOT 3 IN DP788451 (CT EDITION 5 DATED 06/12/2023 SEARCH DATE 02/02/2024)
- AFFECTED BY:
  - EASEMENT FOR TRANSMISSION LINE (J892295)
  - EASEMENT (J892295) VESTED IN SHORTLAND ELECTRICITY (Q332380)
  - RESTRICTION ON THE USE OF LAND (DP788451)

EASEMENTS AND RESTRICTIONS NOTED ON THE TITLE HAVE NOT BEEN INVESTIGATED. THESE SHOULD BE INVESTIGATED PRIOR TO DESIGN TO ENSURE ANY FUTURE DEVELOPMENT COMPLIES.

**SERVICES NOTES**

ONLY THOSE SERVICES VISIBLE AT THE TIME OF SURVEY HAVE BEEN LOCATED AND ARE QUALITY LEVEL A AS DEFINED BY AS 5488.1:2019.

UNDERGROUND SERVICES HAVE BEEN LOCATED BY ONPOINT LOCATING ON 05/06/2024 USING EQUIPMENT AS NOTED IN REPORT PROVIDED. THE SERVICE POSITION IS SHOWN ON THE PLAN AND THEIR RESPECTIVE DEPTH AND QUALITY ARE AS STATED IN THE TABLE.

ALL RELEVANT AUTHORITIES MUST BE CONTACTED TO DETERMINE THE FULL EXTENT OF SERVICES PRIOR TO ANY PLANNING OR WORKS NEAR THE SITE.

UNDERGROUND SERVICES LEGEND	
QUALITY LEVEL B (AS 5488.1:2019)	
	POTABLE WATER MAIN
	STORMWATER PIPE
	SEWER MAIN
	COMMUNICATIONS CABLES
	OVERHEAD WIRES
CAUTION: FIBRE OPTIC CABLES ARE PRESENT IN THIS AREA	

- SERVICES NOTES:**
- ONLY THOSE SERVICES VISIBLE AT THE TIME OF SURVEY HAVE BEEN LOCATED AND IF SHOWN AS "A" ARE QUALITY LEVEL A AS DEFINED BY AS 5488.1:2019. LEVELS SHOWN ARE SURFACE LEVELS UNLESS NOTED OTHERWISE.
  - UNDERGROUND SERVICES HAVE BEEN LOCATED FOR POSITION AND DEPTH UTILISING REMOTE SENSING EQUIPMENT BY ONPOINT LOCATING ON 05/06/2024. ALL RELEVANT AUTHORITIES MUST BE CONTACTED TO DETERMINE THE FULL EXTENT OF SERVICES PRIOR TO ANY PLANNING OR WORKS NEAR THE SITE.

LEGEND	
TAG	DESCRIPTION
COM	COMMUNICATIONS PIT
CULV	PIPED CULVERT
GR	GRATE
HYD	HYDRANT
EB	EDGE OF BITUMEN
TK	TOP OF KERB
GUT	GUTTER OF KERB
LIP	LIP OF KERB
LM	ROAD LINE MARKING
PC	PEDESTRIAN CROSSING
TAG	DESCRIPTION
PP	POWER POLE
SEW	SEWER VACUUM LINE BOX
SS	STREET SIGN
SV	STOP VALVE
MM	MONITORING WELL
TB	TOP OF BANK
BB	BOTTOM OF BANK
VC	VEHICLE CROSSING
WM	WATER METER

**© COPYRIGHT**

THIS PLAN IS NOT TO BE USED FOR ANY PURPOSE OTHER THAN ITS ORIGINAL INTENTION AND REMAINS THE PROPERTY OF SDG. THIS PLAN CANNOT BE REPRODUCED, COPIED OR DIGITALLY TRANSFERRED (IN WHOLE OR PART) WITHOUT PRIOR WRITTEN PERMISSION OF SDG.

**PROJECT:**

**DETAIL AND LEVEL SURVEY OF LOT 3 IN DP 788451**

**No.6 ABUNDANCE ROAD MEDOWIE**

CLIENT: School Infrastructure NSW	
FILE: DDWO0575523 - Medowie High School Abundance Road SDG Pty Ltd.dwg	
LGA: PORT STEPHENS	
REF: 9106	CONTOURS: 0.5m
ISSUE: A	DATUM: AHD
SURVEY DATE: 05/06/2024	AZIMUTH: MGA2020
SCALE: 1:200	SHEET 2 OF 10



SDG Pty Ltd  
abn 85 213 523 621  
Suite 1, 3 Railway Street, Baulkham Hills NSW 2153  
t: (02) 9630 7955 w: sdg.net.au  
Liability limited by a scheme approved under Professional Standards Legislation

Schedule of Easements & Restrictions	
No	Description
(A)	EASEMENT FOR TRANSMISSION LINE (J892295)
(B)	RESTRICTION(S) ON THE USE OF LAND (DP788451)

SEE SHEET 10 FOR TREE & UNDERGROUND SERVICES TABLES

ISSUE	DATE	AMENDMENT	SURV	CHK
A	05/06/24	ORIGINAL ISSUE	GS	JB

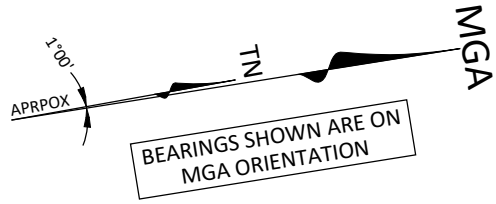


Jonathan Burke ID:SU000684  
REGISTERED LAND SURVEYOR









**GENERAL NOTES**

ONLY TREES GREATER THAN 3.5 METRES IN HEIGHT ARE SHOWN ON THIS PLAN. TREE POSITIONS ARE DIAGRAMMATIC ONLY AND MAY REQUIRE ADDITIONAL SURVEY WHERE CRITICAL TO DESIGN.

CONTOURS ARE INDICATIVE AT GROUND FORM ONLY. SPOT LEVELS ONLY SHOULD BE USED FOR CALCULATIONS OF QUANTITIES WITH CAUTION.

LEVELS ARE ON AUSTRALIAN HEIGHT DATUM (AHD).

**BOUNDARY NOTES**

THE BOUNDARIES OF THE LAND HAVE BEEN SURVEYED. UNLESS SHOWN OTHERWISE BOUNDARY DIMENSIONS ARE BY TITLE DIAGRAM DP788451.

BOUNDARIES HAVE NOT BEEN MARKED.

**SURVEY INFORMATION NOTES**

THE ORIGIN OF COORDINATES COMES FROM PM 27710 E392870.419 N6376967.041 CLASS B POSITIONAL UNCERTAINTY (PU) 0.02 (MGA2020) ADOPTED FROM SCIMS DATED 27/05/2024.

THE ORIGIN OF LEVELS COMES FROM PM 27710 RL13.178 CLASS 1C POSITIONAL UNCERTAINTY (PU) 0.04 ADOPTED FROM SCIMS DATED 27/05/2024.

THE ORIENTATION OF THIS PLAN IS MGA NORTH DETERMINED FROM DP1279705.

**CERTIFICATE OF TITLE NOTES**

THE FOLLOWING INFORMATION RELATES TO THE CERTIFICATE OF TITLE(CT) OF THE SUBJECT LOT:

- LOT 3 IN DP788451  
(CT EDITION 5 DATED 06/12/2023 SEARCH DATE 02/02/2024)

- AFFECTED BY:

- EASEMENT FOR TRANSMISSION LINE (J892295)
- EASEMENT (J892295) VESTED IN SHORTLAND ELECTRICITY (Q332380)
- RESTRICTION ON THE USE OF LAND (DP788451)

EASEMENTS AND RESTRICTIONS NOTED ON THE TITLE HAVE NOT BEEN INVESTIGATED. THESE SHOULD BE INVESTIGATED PRIOR TO DESIGN TO ENSURE ANY FUTURE DEVELOPMENT COMPLIES.

**SERVICES NOTES**

ONLY THOSE SERVICES VISIBLE AT THE TIME OF SURVEY HAVE BEEN LOCATED AND ARE QUALITY LEVEL A AS DEFINED BY AS 5488.1:2019.

UNDERGROUND SERVICES HAVE BEEN LOCATED BY ONPOINT LOCATING ON 05/06/2024 USING EQUIPMENT AS NOTED IN REPORT PROVIDED. THE SERVICE POSITION IS SHOWN ON THE PLAN AND THEIR RESPECTIVE DEPTH AND QUALITY ARE AS STATED IN THE TABLE.

ALL RELEVANT AUTHORITIES MUST BE CONTACTED TO DETERMINE THE FULL EXTENT OF SERVICES PRIOR TO ANY PLANNING OR WORKS NEAR THE SITE.

**UNDERGROUND SERVICES LEGEND**  
QUALITY LEVEL B (AS 5488.1:2019)

W	POTABLE WATER MAIN
D	STORMWATER PIPE
S	SEWER MAIN
C	COMMUNICATIONS CABLES
	OVERHEAD WIRES

CAUTION: FIBRE OPTIC CABLES ARE PRESENT IN THIS AREA

**SERVICES NOTES:-**

- ONLY THOSE SERVICES VISIBLE AT THE TIME OF SURVEY HAVE BEEN LOCATED AND IF SHOWN AS "A" ARE QUALITY LEVEL A AS DEFINED BY AS 5488.1:2019. LEVELS SHOWN ARE SURFACE LEVELS UNLESS NOTED OTHERWISE.
- UNDERGROUND SERVICES HAVE BEEN LOCATED FOR POSITION AND DEPTH UTILISING REMOTE SENSING EQUIPMENT BY ONPOINT LOCATING ON 05/06/2024. ALL RELEVANT AUTHORITIES MUST BE CONTRACTED TO DETERMINE THE FULL EXTENT OF SERVICES PRIOR TO ANY PLANNING OR WORKS NEAR THE SITE.

LEGEND	
TAG	DESCRIPTION
COM	COMMUNICATIONS PIT
CULV	PIPED CULVERT
GR	GRATE
HYD	HYDRANT
EB	EDGE OF BITUMEN
TK	TOP OF KERB
GUT	GUTTER OF KERB
LIP	LIP OF KERB
LM	ROAD LINE MARKING
PC	PEDESTRIAN CROSSING
PP	POWER POLE
SEW	SEWER VACUUM LINE BOX
SS	STREET SIGN
SV	STOP VALVE
MW	MONITORING WELL
TB	TOP OF BANK
BB	BOTTOM OF BANK
VC	VEHICLE CROSSING
WM	WATER METER

**© COPYRIGHT**

THIS PLAN IS NOT TO BE USED FOR ANY PURPOSE OTHER THAN ITS ORIGINAL INTENTION AND REMAINS THE PROPERTY OF SDG. THIS PLAN CANNOT BE REPRODUCED, COPIED OR DIGITALLY TRANSFERRED (IN WHOLE OR PART) WITHOUT PRIOR WRITTEN PERMISSION OF SDG.

**PROJECT:**

**DETAIL AND LEVEL SURVEY OF LOT 3 IN DP 788451**

**No.6 ABUNDANCE ROAD MEDOWIE**

**CLIENT:** School Infrastructure NSW

**FILE:** DDWO0575523 - Medowie High School Abundance Road SDG Pty Ltd.dwg

**LGA:** PORT STEPHENS

REF: 9106	CONTOURS: 0.5m
ISSUE: A	DATUM: AHD
SURVEY DATE: 05/06/2024	AZIMUTH: MGA2020
SCALE: 1:200	<b>SHEET 4 OF 10</b>



SDG Pty Ltd  
abn 85 213 523 621  
Suite 1, 3 Railway Street, Baulkham Hills NSW 2153  
t: (02) 9630 7955 w: sdg.net.au  
Liability limited by a scheme approved under Professional Standards Legislation

No.8A ABUNDANCE ROAD  
2  
DP831238

No.8 ABUNDANCE ROAD  
1  
DP831238

No.24 FERODALE ROAD  
80  
DP826540

NOT SURVEYED 9°05'10" ~ 265.355

**3**  
DP788451  
6.51 ha (BY TITLE)  
**(B)**

AREA OF THICK VEGETATION  
LIMITED SURVEY INFORMATION

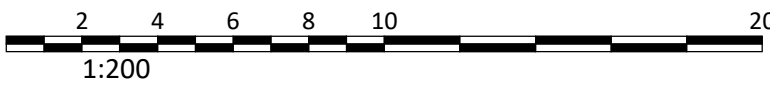
Schedule of Easements & Restrictions	
No	Description
(A)	EASEMENT FOR TRANSMISSION LINE (J892295)
(B)	RESTRICTION(S) ON THE USE OF LAND (DP788451)

SEE SHEET 10 FOR TREE & UNDERGROUND SERVICES TABLES

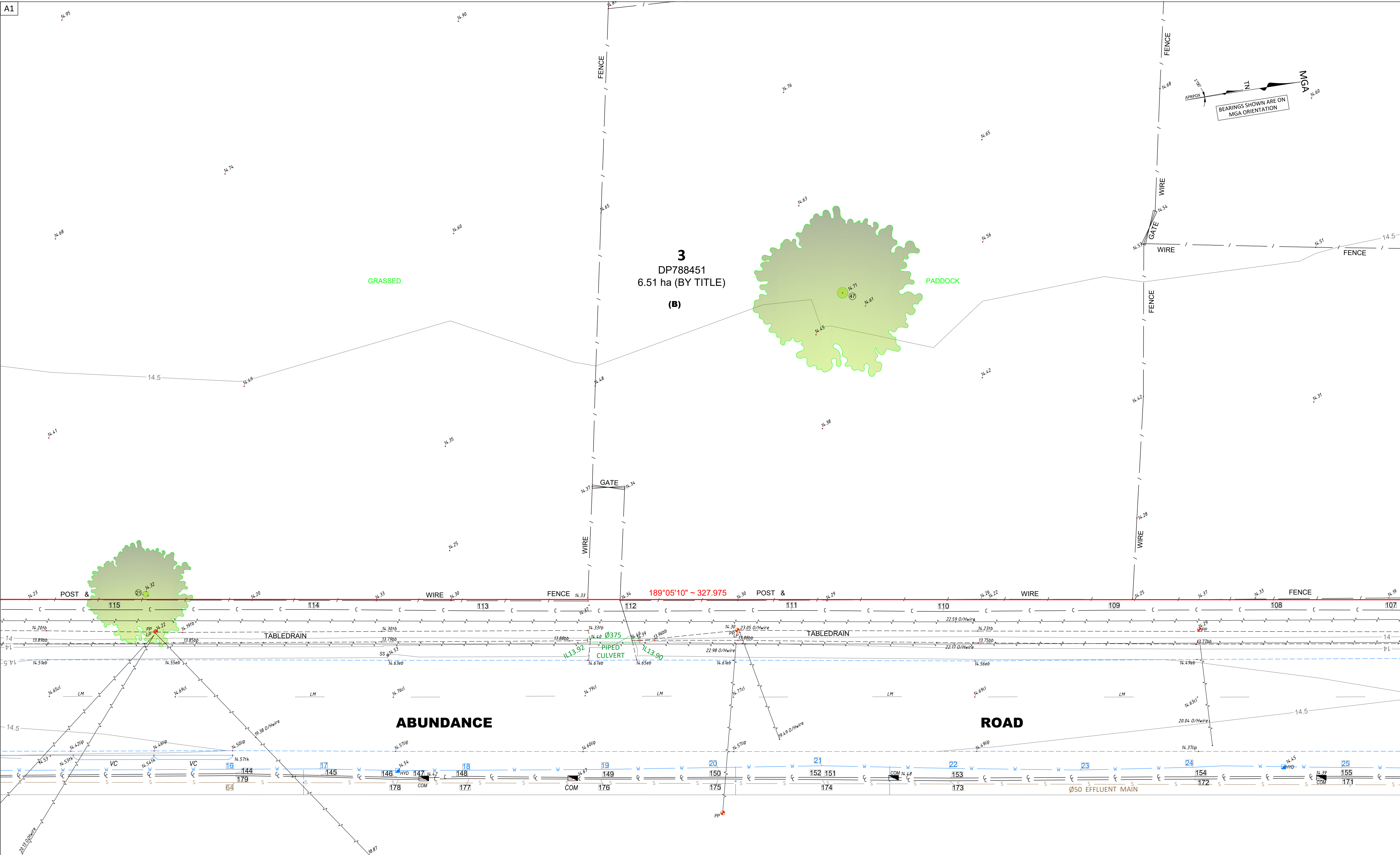
ISSUE	DATE	AMENDMENT	SURV	CHK
A	05/06/24	ORIGINAL ISSUE	GS	JB



Jonathan Burke ID:SU000684  
REGISTERED LAND SURVEYOR



A1



GENERAL NOTES

ONLY TREES GREATER THAN 3.5 METRES IN HEIGHT ARE SHOWN ON THIS PLAN. TREE POSITIONS ARE DIAGRAMMATIC ONLY AND MAY REQUIRE ADDITIONAL SURVEY WHERE CRITICAL TO DESIGN.

CONTOURS ARE INDICATIVE AT GROUND FORM ONLY. SPOT LEVELS ONLY SHOULD BE USED FOR CALCULATIONS OF QUANTITIES WITH CAUTION.

LEVELS ARE ON AUSTRALIAN HEIGHT DATUM (AHD).

BOUNDARY NOTES

THE BOUNDARIES OF THE LAND HAVE BEEN SURVEYED. UNLESS SHOWN OTHERWISE BOUNDARY DIMENSIONS ARE BY TITLE DIAGRAM DP788451.

BOUNDARIES HAVE NOT BEEN MARKED.

SURVEY INFORMATION NOTES

THE ORIGIN OF COORDINATES COMES FROM PM 27710 E392870.419 N6376967.041 CLASS B POSITIONAL UNCERTAINTY (PU) 0.02 (MGA2020) ADOPTED FROM SCIMS DATED 27/05/2024.

THE ORIGIN OF LEVELS COMES FROM PM 27710 RL13.178 CLASS 1C POSITIONAL UNCERTAINTY (PU) 0.04 ADOPTED FROM SCIMS DATED 27/05/2024.

THE ORIENTATION OF THIS PLAN IS MGA NORTH DETERMINED FROM DP1279705.

CERTIFICATE OF TITLE NOTES

THE FOLLOWING INFORMATION RELATES TO THE CERTIFICATE OF TITLE(CT) OF THE SUBJECT LOT:

- LOT 3 IN DP788451 (CT EDITION 5 DATED 06/12/2023 SEARCH DATE 02/02/2024)
- AFFECTED BY:
  - EASEMENT FOR TRANSMISSION LINE (J892295)
  - EASEMENT (J892295) VESTED IN SHORTLAND ELECTRICITY (Q332380)
  - RESTRICTION ON THE USE OF LAND (DP788451)

EASEMENTS AND RESTRICTIONS NOTED ON THE TITLE HAVE NOT BEEN INVESTIGATED. THESE SHOULD BE INVESTIGATED PRIOR TO DESIGN TO ENSURE ANY FUTURE DEVELOPMENT COMPLIES.

SERVICES NOTES

ONLY THOSE SERVICES VISIBLE AT THE TIME OF SURVEY HAVE BEEN LOCATED AND ARE QUALITY LEVEL A AS DEFINED BY AS 5488.1:2019.

UNDERGROUND SERVICES HAVE BEEN LOCATED BY ONPOINT LOCATING ON 05/06/2024 USING EQUIPMENT AS NOTED IN REPORT PROVIDED. THE SERVICE POSITION IS SHOWN ON THE PLAN AND THEIR RESPECTIVE DEPTH AND QUALITY ARE AS STATED IN THE TABLE.

ALL RELEVANT AUTHORITIES MUST BE CONTACTED TO DETERMINE THE FULL EXTENT OF SERVICES PRIOR TO ANY PLANNING OR WORKS NEAR THE SITE.

UNDERGROUND SERVICES LEGEND	
QUALITY LEVEL B (AS 5488.1:2019)	
	POTABLE WATER MAIN
	STORMWATER PIPE
	SEWER MAIN
	COMMUNICATIONS CABLES
	OVERHEAD WIRES
CAUTION: FIBRE OPTIC CABLES ARE PRESENT IN THIS AREA	

- SERVICES NOTES:
- ONLY THOSE SERVICES VISIBLE AT THE TIME OF SURVEY HAVE BEEN LOCATED AND IF SHOWN AS "A" ARE QUALITY LEVEL A AS DEFINED BY AS 5488.1:2019. LEVELS SHOWN ARE SURFACE LEVELS UNLESS NOTED OTHERWISE.
  - UNDERGROUND SERVICES HAVE BEEN LOCATED FOR POSITION AND DEPTH UTILISING REMOTE SENSING EQUIPMENT BY ONPOINT LOCATING ON 05/06/2024. ALL RELEVANT AUTHORITIES MUST BE CONTACTED TO DETERMINE THE FULL EXTENT OF SERVICES PRIOR TO ANY PLANNING OR WORKS NEAR THE SITE.

LEGEND	
TAG	DESCRIPTION
COM	COMMUNICATIONS PIT
CULV	PIPED CULVERT
GR	GRATE
HYD	HYDRANT
EB	EDGE OF BITUMEN
TK	TOP OF KERB
GUT	GUTTER OF KERB
LIP	LIP OF KERB
LM	ROAD LINE MARKING
PC	PEDESTRIAN CROSSING
TAG	DESCRIPTION
PP	POWER POLE
SEW	SEWER VACUUM LINE BOX
SS	STREET SIGN
SV	STOP VALVE
MW	MONITORING WELL
TB	TOP OF BANK
BB	BOTTOM OF BANK
VC	VEHICLE CROSSING
WM	WATER METER

© COPYRIGHT

THIS PLAN IS NOT TO BE USED FOR ANY PURPOSE OTHER THAN ITS ORIGINAL INTENTION AND REMAINS THE PROPERTY OF SDG. THIS PLAN CANNOT BE REPRODUCED, COPIED OR DIGITALLY TRANSFERRED (IN WHOLE OR PART) WITHOUT PRIOR WRITTEN PERMISSION OF SDG.

PROJECT:

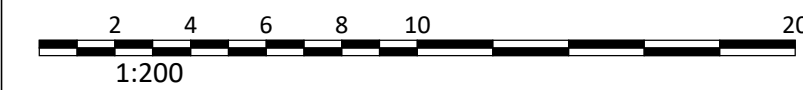
DETAIL AND LEVEL SURVEY OF LOT 3 IN DP 788451

No.6 ABUNDANCE ROAD MEDOWIE

CLIENT: School Infrastructure NSW	
FILE: DDWO0575523 - Medowie High School Abundance Road SDG Pty Ltd.dwg	
LGA: PORT STEPHENS	
REF: 9106	CONTOURS: 0.5m
ISSUE: A	DATUM: AHD
SURVEY DATE: 05/06/2024	AZIMUTH: MGA2020
SCALE: 1:200	SHEET 5 OF 10



SDG Pty Ltd  
abn 95 213 523 621  
Suite 1, 3 Railway Street, Baulkham Hills NSW 2153  
t: (02) 9630 7955 w: sdg.net.au  
Liability limited by a scheme approved under Professional Standards Legislation



Schedule of Easements & Restrictions	
No	Description
(A)	EASEMENT FOR TRANSMISSION LINE (J892295)
(B)	RESTRICTION(S) ON THE USE OF LAND (DP788451)

SEE SHEET 10 FOR TREE & UNDERGROUND SERVICES TABLES

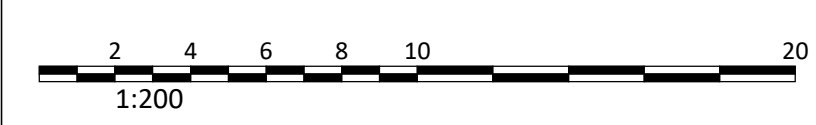
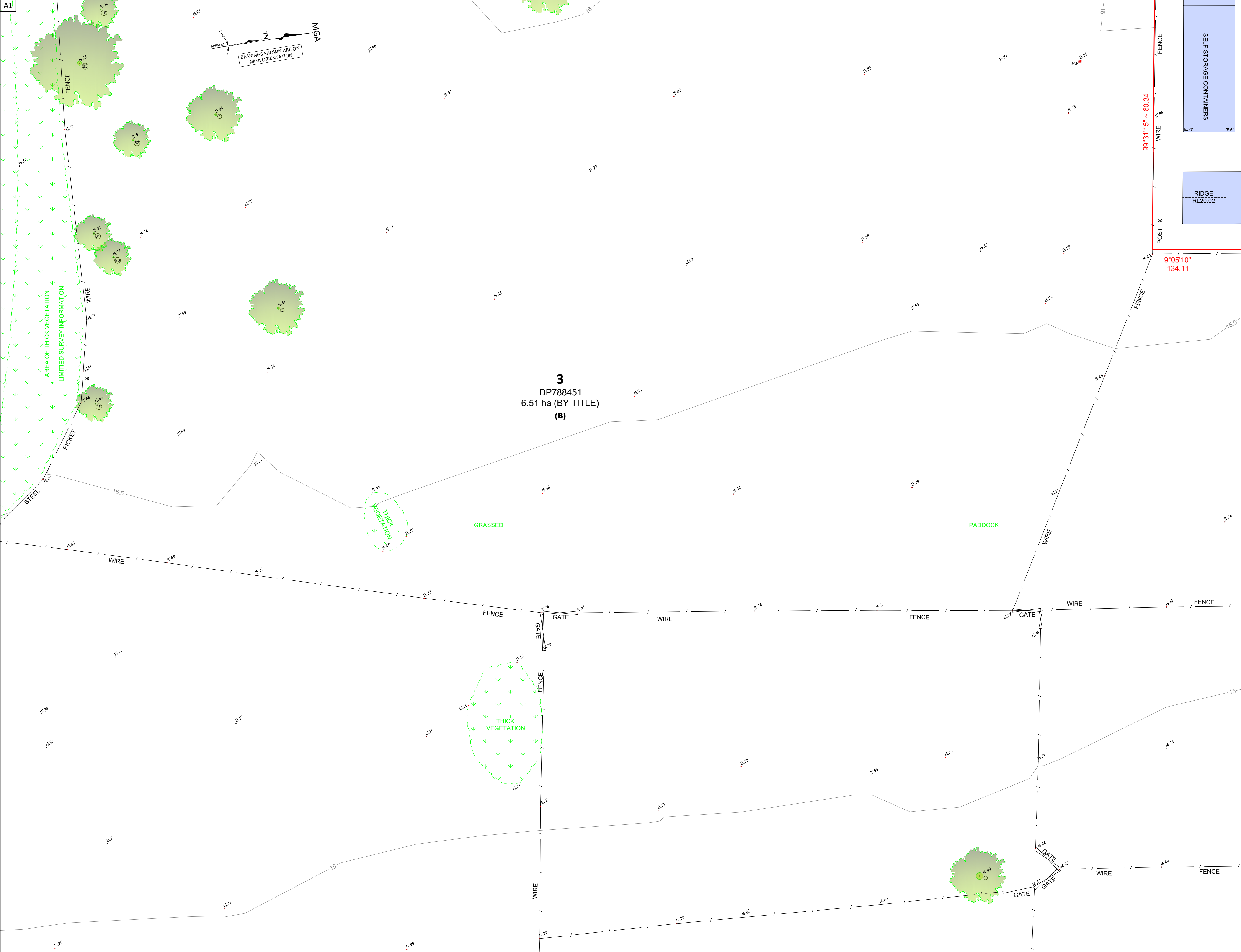
ISSUE	DATE	AMENDMENT	SURV	CHK
A	05/06/24	ORIGINAL ISSUE	GS	JB



Jonathan Burke ID:SU000684  
REGISTERED LAND SURVEYOR



A1



Schedule of Easements & Restrictions	
No	Description
(A)	EASEMENT FOR TRANSMISSION LINE (J892295)
(B)	RESTRICTION(S) ON THE USE OF LAND (DP788451)

SEE SHEET 10 FOR TREE & UNDERGROUND SERVICES TABLES

ISSUE	DATE	AMENDMENT	SURV	CHK
A	05/06/24	ORIGINAL ISSUE	GS	JB



Jonathan Burke ID:SU000684  
REGISTERED LAND SURVEYOR

GENERAL NOTES

ONLY TREES GREATER THAN 3.5 METRES IN HEIGHT ARE SHOWN ON THIS PLAN. TREE POSITIONS ARE DIAGRAMMATIC ONLY AND MAY REQUIRE ADDITIONAL SURVEY WHERE CRITICAL TO DESIGN.

CONTOURS ARE INDICATIVE AT GROUND FORM ONLY. SPOT LEVELS ONLY SHOULD BE USED FOR CALCULATIONS OF QUANTITIES WITH CAUTION.

LEVELS ARE ON AUSTRALIAN HEIGHT DATUM (AHD).

BOUNDARY NOTES

THE BOUNDARIES OF THE LAND HAVE BEEN SURVEYED. UNLESS SHOWN OTHERWISE BOUNDARY DIMENSIONS ARE BY TITLE DIAGRAM DP788451.

BOUNDARIES HAVE NOT BEEN MARKED.

SURVEY INFORMATION NOTES

THE ORIGIN OF COORDINATES COMES FROM PM 27710 E392870.419 N6376967.041 CLASS B POSITIONAL UNCERTAINTY (PU) 0.02 (MGA2020) ADOPTED FROM SCIMS DATED 27/05/2024.

THE ORIGIN OF LEVELS COMES FROM PM 27710 RL13.178 CLASS LC POSITIONAL UNCERTAINTY (PU) 0.04 ADOPTED FROM SCIMS DATED 27/05/2024.

THE ORIENTATION OF THIS PLAN IS MGA NORTH DETERMINED FROM DP1279705.

CERTIFICATE OF TITLE NOTES

THE FOLLOWING INFORMATION RELATES TO THE CERTIFICATE OF TITLE(CT) OF THE SUBJECT LOT:

- LOT 3 IN DP788451 (CT EDITION 5 DATED 06/12/2023 SEARCH DATE 02/02/2024)
- AFFECTED BY:
  - EASEMENT FOR TRANSMISSION LINE (J892295)
  - EASEMENT (J892295) VESTED IN SHORTLAND ELECTRICITY (Q332380)
  - RESTRICTION ON THE USE OF LAND (DP788451)

EASEMENTS AND RESTRICTIONS NOTED ON THE TITLE HAVE NOT BEEN INVESTIGATED. THESE SHOULD BE INVESTIGATED PRIOR TO DESIGN TO ENSURE ANY FUTURE DEVELOPMENT COMPLIES.

SERVICES NOTES

ONLY THOSE SERVICES VISIBLE AT THE TIME OF SURVEY HAVE BEEN LOCATED AND ARE QUALITY LEVEL A AS DEFINED BY AS 5488.1:2019.

UNDERGROUND SERVICES HAVE BEEN LOCATED BY ONPOINT LOCATING ON 05/06/2024 USING EQUIPMENT AS NOTED IN REPORT PROVIDED. THE SERVICE POSITION IS SHOWN ON THE PLAN AND THEIR RESPECTIVE DEPTH AND QUALITY ARE AS STATED IN THE TABLE.

ALL RELEVANT AUTHORITIES MUST BE CONTACTED TO DETERMINE THE FULL EXTENT OF SERVICES PRIOR TO ANY PLANNING OR WORKS NEAR THE SITE.

UNDERGROUND SERVICES LEGEND  
QUALITY LEVEL B (AS 5488.1:2019)

W	POTABLE WATER MAIN
D	STORMWATER PIPE
S	SEWER MAIN
C	COMMUNICATIONS CABLES
	OVERHEAD WIRES

CAUTION: FIBRE OPTIC CABLES ARE PRESENT IN THIS AREA

SERVICES NOTES:

- ONLY THOSE SERVICES VISIBLE AT THE TIME OF SURVEY HAVE BEEN LOCATED AND IF SHOWN AS "A" ARE QUALITY LEVEL A AS DEFINED BY AS 5488.1:2019. LEVELS SHOWN ARE SURFACE LEVELS UNLESS NOTED OTHERWISE.
- UNDERGROUND SERVICES HAVE BEEN LOCATED FOR POSITION AND DEPTH UTILISING REMOTE SENSING EQUIPMENT BY ONPOINT LOCATING ON 05/06/2024. ALL RELEVANT AUTHORITIES MUST BE CONTRACTED TO DETERMINE THE FULL EXTENT OF SERVICES PRIOR TO ANY PLANNING OR WORKS NEAR THE SITE.

LEGEND	
TAG	DESCRIPTION
COM	COMMUNICATIONS PIT
CULV	PIPED CULVERT
GR	GRATE
HYD	HYDRANT
EB	EDGE OF BITUMEN
TK	TOP OF KERB
GUT	GUTTER OF KERB
LIP	LIP OF KERB
LM	ROAD LINE MARKING
PC	PEDESTRIAN CROSSING

TAG	DESCRIPTION
PP	POWER POLE
SEW	SEWER VACUUM LINE BOX
SS	STREET SIGN
SV	STOP VALVE
MW	MONITORING WELL
TB	TOP OF BANK
BB	BOTTOM OF BANK
VC	VEHICLE CROSSING
WM	WATER METER

© COPYRIGHT

THIS PLAN IS NOT TO BE USED FOR ANY PURPOSE OTHER THAN ITS ORIGINAL INTENTION AND REMAINS THE PROPERTY OF SDG. THIS PLAN CANNOT BE REPRODUCED, COPIED OR DIGITALLY TRANSFERRED (IN WHOLE OR PART) WITHOUT PRIOR WRITTEN PERMISSION OF SDG.

PROJECT:

DETAIL AND LEVEL SURVEY OF LOT 3 IN DP 788451

No.6 ABUNDANCE ROAD MEDOWIE

CLIENT: School Infrastructure NSW

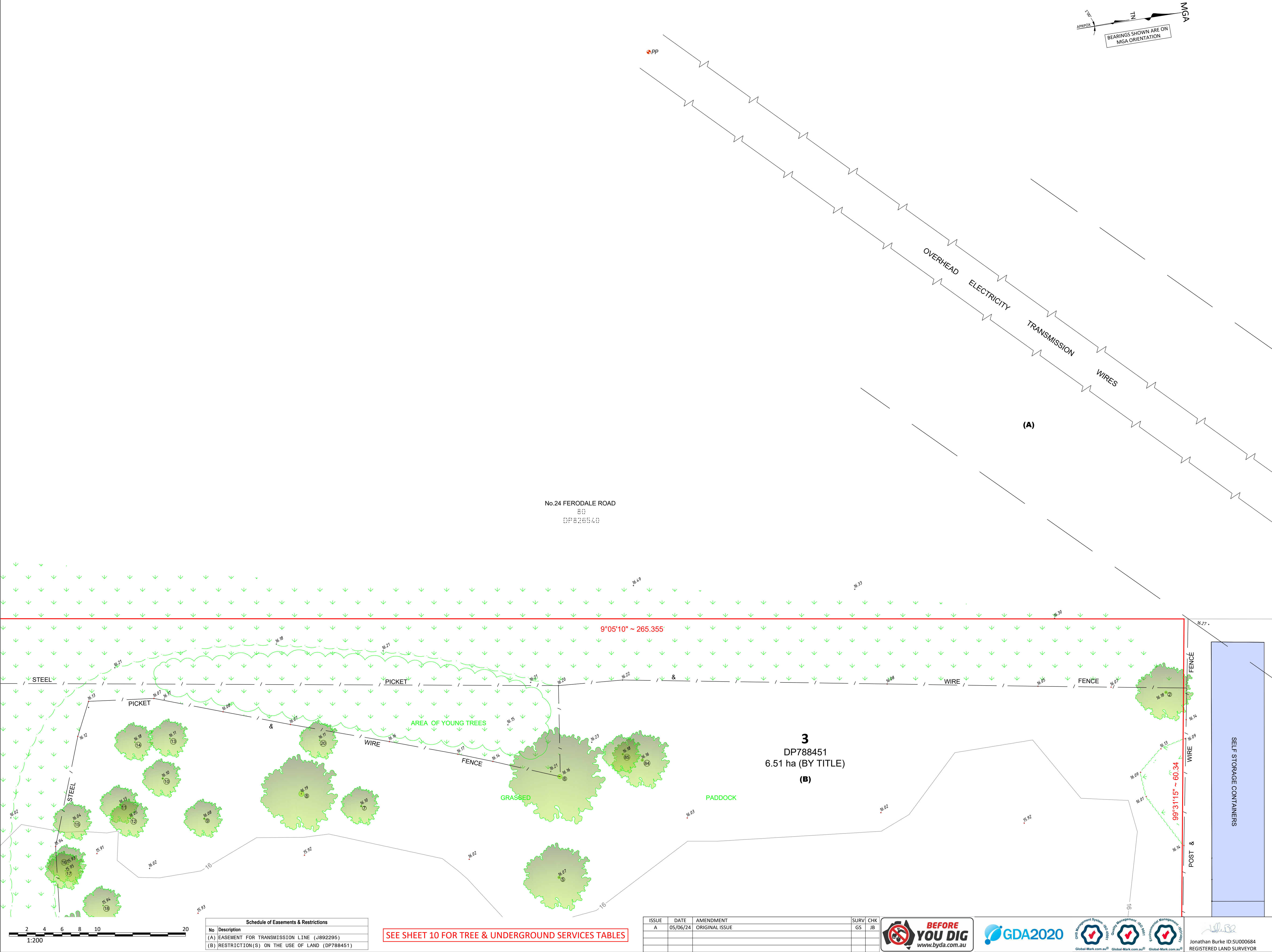
FILE: DDWO0575523 - Medowie High School Abundance Road SDG Pty Ltd.dwg

LGA: PORT STEPHENS

REF: 9106	CONTOURS: 0.5m
ISSUE: A	DATUM: AHD
SURVEY DATE: 05/06/2024	AZIMUTH: MGA2020
SCALE: 1:200	SHEET 6 OF 10

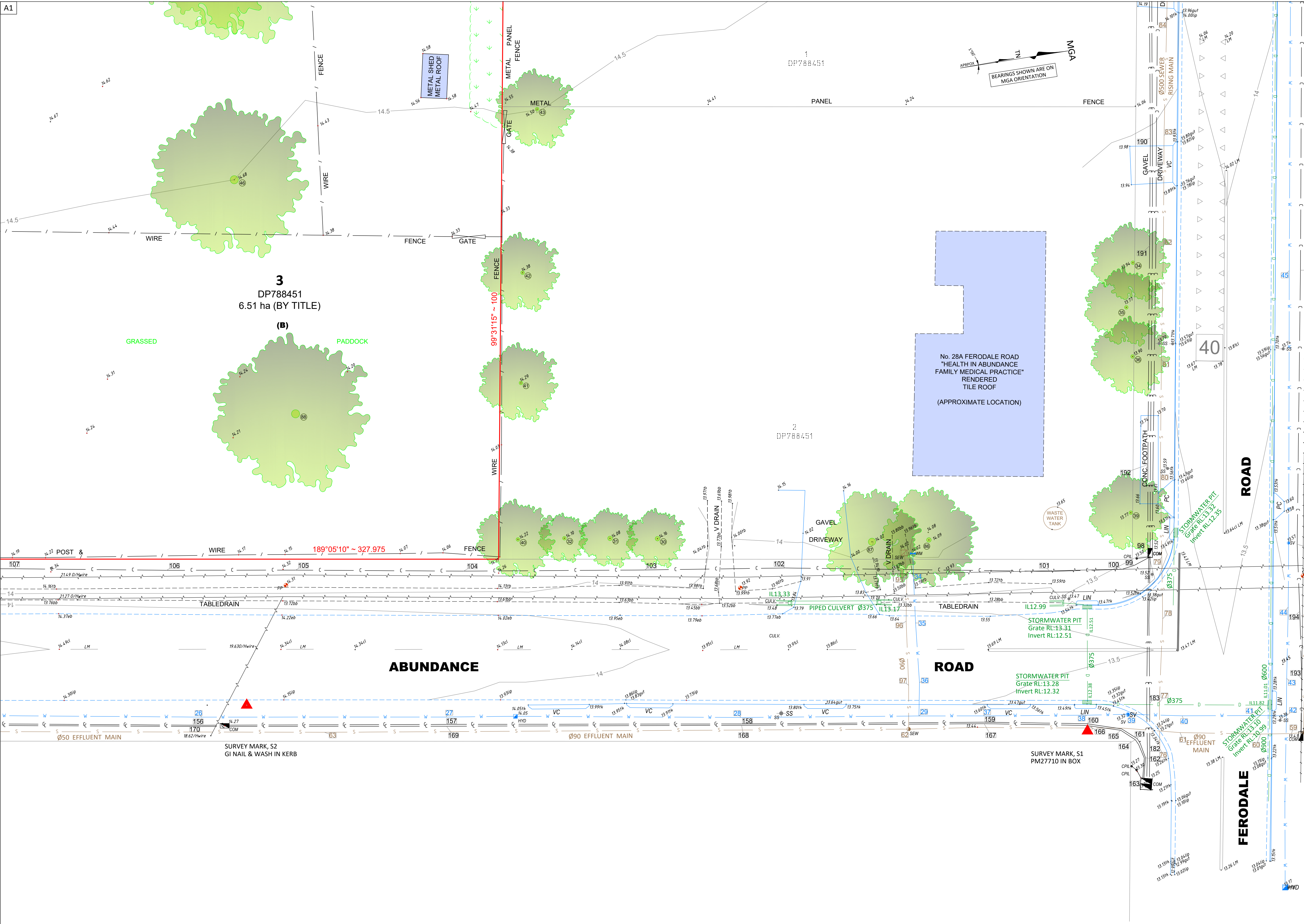
SDG Pty Ltd  
abn 85 213 523 621  
Suite 1, 3 Railway Street, Baulkham Hills NSW 2153  
t: (02) 9630 7955 w: sdg.net.au  
Liability limited by a scheme approved under Professional Standards Legislation







A1



**GENERAL NOTES**

ONLY TREES GREATER THAN 3.5 METRES IN HEIGHT ARE SHOWN ON THIS PLAN. TREE POSITIONS ARE DIAGRAMMATIC ONLY AND MAY REQUIRE ADDITIONAL SURVEY WHERE CRITICAL TO DESIGN.

CONTOURS ARE INDICATIVE AT GROUND FORM ONLY. SPOT LEVELS ONLY SHOULD BE USED FOR CALCULATIONS OF QUANTITIES WITH CAUTION.

LEVELS ARE ON AUSTRALIAN HEIGHT DATUM (AHD).

**BOUNDARY NOTES**

THE BOUNDARIES OF THE LAND HAVE BEEN SURVEYED. UNLESS SHOWN OTHERWISE BOUNDARY DIMENSIONS ARE BY TITLE DIAGRAM DP788451.

BOUNDARIES HAVE NOT BEEN MARKED.

**SURVEY INFORMATION NOTES**

THE ORIGIN OF COORDINATES COMES FROM PM 27710 E392870.419 N6376967.041 CLASS B POSITIONAL UNCERTAINTY (PU) 0.02 (MGA2020) ADOPTED FROM SCIMS DATED 27/05/2024.

THE ORIGIN OF LEVELS COMES FROM PM 27710 RL13.178 CLASS LC POSITIONAL UNCERTAINTY (PU) 0.04 ADOPTED FROM SCIMS DATED 27/05/2024.

THE ORIENTATION OF THIS PLAN IS MGA NORTH DETERMINED FROM DP1279705.

**CERTIFICATE OF TITLE NOTES**

THE FOLLOWING INFORMATION RELATES TO THE CERTIFICATE OF TITLE(CT) OF THE SUBJECT LOT:

- LOT 3 IN DP788451 (CT EDITION 5 DATED 06/12/2023 SEARCH DATE 02/02/2024)
- AFFECTED BY:
  - EASEMENT FOR TRANSMISSION LINE (J892295)
  - EASEMENT (J892295) VESTED IN SHORTLAND ELECTRICITY (Q332380)
  - RESTRICTION ON THE USE OF LAND (DP788451)

EASEMENTS AND RESTRICTIONS NOTED ON THE TITLE HAVE NOT BEEN INVESTIGATED. THESE SHOULD BE INVESTIGATED PRIOR TO DESIGN TO ENSURE ANY FUTURE DEVELOPMENT COMPLIES.

**SERVICES NOTES**

ONLY THOSE SERVICES VISIBLE AT THE TIME OF SURVEY HAVE BEEN LOCATED AND ARE QUALITY LEVEL A AS DEFINED BY AS 5488.1:2019.

UNDERGROUND SERVICES HAVE BEEN LOCATED BY ONPOINT LOCATING ON 05/06/2024 USING EQUIPMENT AS NOTED IN REPORT PROVIDED. THE SERVICE POSITION IS SHOWN ON THE PLAN AND THEIR RESPECTIVE DEPTH AND QUALITY ARE AS STATED IN THE TABLE.

ALL RELEVANT AUTHORITIES MUST BE CONTACTED TO DETERMINE THE FULL EXTENT OF SERVICES PRIOR TO ANY PLANNING OR WORKS NEAR THE SITE.

**UNDERGROUND SERVICES LEGEND**  
QUALITY LEVEL B (AS 5488.1:2019)

W	POTABLE WATER MAIN
D	STORMWATER PIPE
S	SEWER MAIN
C	COMMUNICATIONS CABLES
~	OVERHEAD WIRES

CAUTION: FIBRE OPTIC CABLES ARE PRESENT IN THIS AREA

**SERVICES NOTES:**

- ONLY THOSE SERVICES VISIBLE AT THE TIME OF SURVEY HAVE BEEN LOCATED AND IF SHOWN AS "A" ARE QUALITY LEVEL A AS DEFINED BY AS 5488.1:2019. LEVELS SHOWN ARE SURFACE LEVELS UNLESS NOTED OTHERWISE.
- UNDERGROUND SERVICES HAVE BEEN LOCATED FOR POSITION AND DEPTH UTILISING REMOTE SENSING EQUIPMENT BY ONPOINT LOCATING ON 05/06/2024. ALL RELEVANT AUTHORITIES MUST BE CONTACTED TO DETERMINE THE FULL EXTENT OF SERVICES PRIOR TO ANY PLANNING OR WORKS NEAR THE SITE.

**LEGEND**

TAG	DESCRIPTION	TAG	DESCRIPTION
COM	COMMUNICATIONS PIT	PP	POWER POLE
SEW	SEWER VACUUM LINE BOX	SS	STREET SIGN
GR	GRATE	SV	STOP VALVE
HYD	HYDRANT	MW	MONITORING WELL
EB	EDGE OF BITUMEN	TK	TOP OF KERB
GUT	GUTTER OF KERB	BB	BOTTOM OF BANK
LIP	LIP OF KERB	VC	VEHICLE CROSSING
LP	LIGHT POLE	WM	WATER METER
LM	ROAD LINE MARKING		
PC	PEDESTRIAN CROSSING		

**© COPYRIGHT**

THIS PLAN IS NOT TO BE USED FOR ANY PURPOSE OTHER THAN ITS ORIGINAL INTENTION AND REMAINS THE PROPERTY OF SDG. THIS PLAN CANNOT BE REPRODUCED, COPIED OR DIGITALLY TRANSFERRED (IN WHOLE OR PART) WITHOUT PRIOR WRITTEN PERMISSION OF SDG.

**PROJECT:**

DETAIL AND LEVEL SURVEY OF LOT 3 IN DP 788451

No.6 ABUNDANCE ROAD MEDOWIE

CLIENT: School Infrastructure NSW

FILE: DDWO057523 - Medowie High School Abundance Road SDG Pty Ltd.dwg

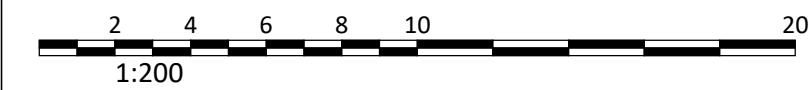
LGA: PORT STEPHENS

REF: 9106      CONTOURS: 0.5m

ISSUE: A      DATUM: AHD

SURVEY DATE: 05/06/2024      AZIMUTH: MGA2020

SCALE: 1:200      SHEET 8 OF 10



Schedule of Easements & Restrictions	
No	Description
(A)	EASEMENT FOR TRANSMISSION LINE (J892295)
(B)	RESTRICTION(S) ON THE USE OF LAND (DP788451)

SEE SHEET 10 FOR TREE & UNDERGROUND SERVICES TABLES

ISSUE	DATE	AMENDMENT	SURV	CHK
A	05/06/24	ORIGINAL ISSUE	GS	JB

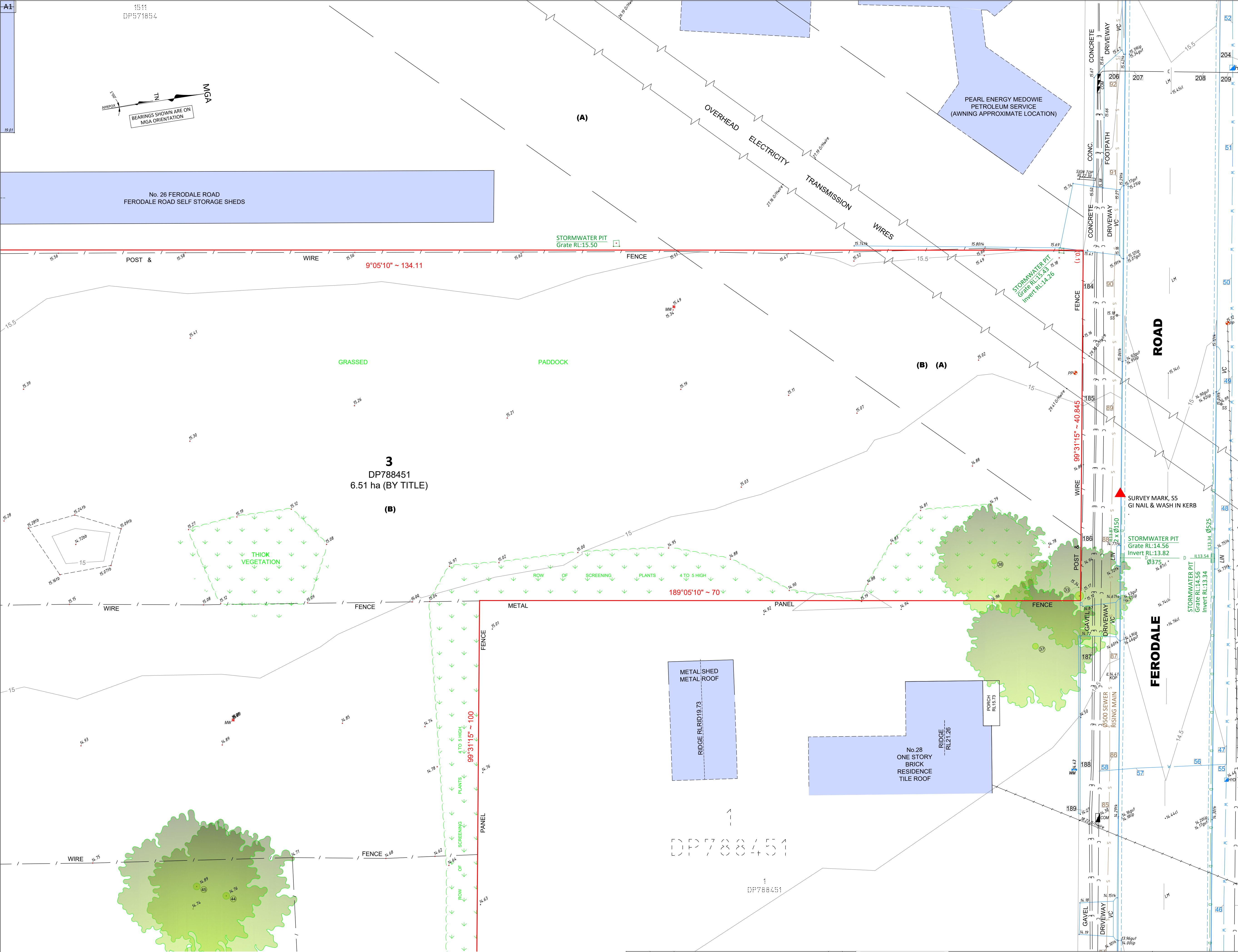


Jonathan Burke ID:SU000684  
REGISTERED LAND SURVEYOR



SDG Pty Ltd  
abn 85 213 523 621  
Suite 1, 3 Railway Street, Baulkham Hills NSW 2153  
t: (02) 9630 7955 w: sdg.net.au  
Liability limited by a scheme approved under Professional Standards Legislation





GENERAL NOTES

ONLY TREES GREATER THAN 3.5 METRES IN HEIGHT ARE SHOWN ON THIS PLAN. TREE POSITIONS ARE DIAGRAMMATIC ONLY AND MAY REQUIRE ADDITIONAL SURVEY WHERE CRITICAL TO DESIGN.

CONTOURS ARE INDICATIVE AT GROUND FORM ONLY. SPOT LEVELS ONLY SHOULD BE USED FOR CALCULATIONS OF QUANTITIES WITH CAUTION.

LEVELS ARE ON AUSTRALIAN HEIGHT DATUM (AHD).

BOUNDARY NOTES

THE BOUNDARIES OF THE LAND HAVE BEEN SURVEYED. UNLESS SHOWN OTHERWISE BOUNDARY DIMENSIONS ARE BY TITLE DIAGRAM DP788451.

BOUNDARIES HAVE NOT BEEN MARKED.

SURVEY INFORMATION NOTES

THE ORIGIN OF COORDINATES COMES FROM PM 27710 E392870.419 N6376967.041 CLASS B POSITIONAL UNCERTAINTY (PU) 0.02 (MGA2020) ADOPTED FROM SCIMS DATED 27/05/2024.

THE ORIGIN OF LEVELS COMES FROM PM 27710 RL13.178 CLASS LC POSITIONAL UNCERTAINTY (PU) 0.04 ADOPTED FROM SCIMS DATED 27/05/2024.

THE ORIENTATION OF THIS PLAN IS MGA NORTH DETERMINED FROM DP1279705.

CERTIFICATE OF TITLE NOTES

THE FOLLOWING INFORMATION RELATES TO THE CERTIFICATE OF TITLE(CT) OF THE SUBJECT LOT:

- LOT 3 IN DP788451 (CT EDITION 5 DATED 06/12/2023 SEARCH DATE 02/02/2024)
- AFFECTED BY:
  - EASEMENT FOR TRANSMISSION LINE (J892295)
  - EASEMENT (J892295) VESTED IN SHORTLAND ELECTRICITY (Q332380)
  - RESTRICTION ON THE USE OF LAND (DP788451)

EASEMENTS AND RESTRICTIONS NOTED ON THE TITLE HAVE NOT BEEN INVESTIGATED. THESE SHOULD BE INVESTIGATED PRIOR TO DESIGN TO ENSURE ANY FUTURE DEVELOPMENT COMPLIES.

SERVICES NOTES

ONLY THOSE SERVICES VISIBLE AT THE TIME OF SURVEY HAVE BEEN LOCATED AND ARE QUALITY LEVEL A AS DEFINED BY AS 5488.1:2019.

UNDERGROUND SERVICES HAVE BEEN LOCATED BY ONPOINT LOCATING ON 05/06/2024 USING EQUIPMENT AS NOTED IN REPORT PROVIDED. THE SERVICE POSITION IS SHOWN ON THE PLAN AND THEIR RESPECTIVE DEPTH AND QUALITY ARE AS STATED IN THE TABLE.

ALL RELEVANT AUTHORITIES MUST BE CONTACTED TO DETERMINE THE FULL EXTENT OF SERVICES PRIOR TO ANY PLANNING OR WORKS NEAR THE SITE.

UNDERGROUND SERVICES LEGEND  
QUALITY LEVEL B (AS 5488.1:2019)

W	POTABLE WATER MAIN
D	STORMWATER PIPE
S	SEWER MAIN
C	COMMUNICATIONS CABLES
Wires	OVERHEAD WIRES

CAUTION: FIBRE OPTIC CABLES ARE PRESENT IN THIS AREA

SERVICES NOTES:

- ONLY THOSE SERVICES VISIBLE AT THE TIME OF SURVEY HAVE BEEN LOCATED AND IF SHOWN AS "A" ARE QUALITY LEVEL A AS DEFINED BY AS 5488.1:2019. LEVELS SHOWN ARE SURFACE LEVELS UNLESS NOTED OTHERWISE.
- UNDERGROUND SERVICES HAVE BEEN LOCATED FOR POSITION AND DEPTH UTILISING REMOTE SENSING EQUIPMENT BY ONPOINT LOCATING ON 05/06/2024. ALL RELEVANT AUTHORITIES MUST BE CONTACTED TO DETERMINE THE FULL EXTENT OF SERVICES PRIOR TO ANY PLANNING OR WORKS NEAR THE SITE.

LEGEND

TAG	DESCRIPTION	TAG	DESCRIPTION
COM	COMMUNICATIONS PIT	PP	POWER POLE
CULV	PIPED CULVERT	SEW	SEWER VACUUM LINE BOX
GR	GRATE	SS	STREET SIGN
HYD	HYDRANT	SV	STOP VALVE
EB	EDGE OF BITUMEN	MW	MONITORING WELL
TK	TOP OF KERB	TB	TOP OF BANK
GUT	GUTTER OF KERB	BB	BOTTOM OF BANK
LIP	LIP OF KERB	VC	VEHICLE CROSSING
LP	LIGHT POLE	WM	WATER METER
LM	ROAD LINE MARKING		
PC	PEDESTRIAN CROSSING		

© COPYRIGHT  
THIS PLAN IS NOT TO BE USED FOR ANY PURPOSE OTHER THAN ITS ORIGINAL INTENTION AND REMAINS THE PROPERTY OF SDG. THIS PLAN CANNOT BE REPRODUCED, COPIED OR DIGITALLY TRANSFERRED (IN WHOLE OR PART) WITHOUT PRIOR WRITTEN PERMISSION OF SDG.

PROJECT:  
DETAIL AND LEVEL SURVEY OF  
LOT 3 IN DP 788451

No.6 ABUNDANCE ROAD  
MEDOWIE

CLIENT: School Infrastructure NSW  
FILE: DDWO0575523 - Medowie High School Abundance  
Road SDG Pty Ltd.dwg

LGA: PORT STEPHENS

REF: 9106	CONTOURS: 0.5m
ISSUE: A	DATUM: AHD
SURVEY DATE: 05/06/2024	AZIMUTH: MGA2020
SCALE: 1:200	SHEET 9 OF 10

SDG Pty Ltd  
abn 85 213 523 621  
Suite 1, 3 Railway Street, Baulkham Hills NSW 2153  
t: (02) 9630 7955 w: sdg.net.au  
Liability limited by a scheme approved under Professional Standards Legislation

ISSUE	DATE	AMENDMENT	SURV	CHK
A	05/06/24	ORIGINAL ISSUE	GS	JB

SEE SHEET 10 FOR TREE & UNDERGROUND SERVICES TABLES

DP788451

1  
DP788451

BEFORE YOU DIG  
www.byda.com.au

GDA2020

Global Mark System Ltd  
Global Mark System Ltd  
Global Mark System Ltd

Jonathan Burke ID:SU000684  
REGISTERED LAND SURVEYOR



A1

Schedule of Trees			
No	Diam	Spread	Height
1	0.8	6	6
2	0.3	6	8
3	0.3	6	6
4	0.3	6	6
5	0.3	7	8
6	0.5	10	10
7	0.2	4	7
8	0.6	8	12
9	0.2	4	6
10	0.2	4	6
11	0.2	4	6
12	0.1	4	6
13	0.1	4	6
14	0.1	4	6
15	0.1	4	6
16	0.1	4	6
17	0.1	4	6
18	0.1	4	6
19	0.1	4	6
20	0.1	4	6
21	0.6	10	12
22	0.3	6	8
23	0.3	6	6
24	0.4	8	12
25	0.4	8	12
26	0.6	8	12
27	0.2	4	6
28	0.2	4	6
29	0.3	6	8
30	0.5	6	8
31	0.5	6	8
32	0.4	5	8
33	1	12	20
34	0.4	8	8
35	0.4	8	8
36	0.4	8	12
37	0.7	14	14
38	0.6	12	12
39	0.4	8	8
40	0.4	8	8
41	0.4	8	8
42	0.4	8	8

Schedule of Trees			
No	Diam	Spread	Height
43	0.4	8	8
44	0.8	16	16
45	0.8	16	16
46	0.9	16	16
47	1.1	16	16
48	0.5	8	8
49	0.6	4	14
50	0.9	9	Dead
51	1	15	20
52	0.6	8	12
53	0.6	8	18
54	0.6	4	Dead
55	0.9	18	18
56	0.6	8	8
57	0.5	8	12
58	0.5	8	12
59	0.3	2	Dead
60	0.4	8	11
61	0.2	6	8
62	0.2	6	8
63	0.7	14	20
64	0.8	16	22
65	1.3	20	20
66	0.8	16	16
67	0.6	10	12
68	0.5	8	10
69	0.1	2	5
70	0.5	8	10
71	0.1	2	5
72	0.4	8	16
73	0.2	6	16
74	1.1	22	22
75	0.5	8	16
76	0.5	8	16
77	0.7	14	18
78	0.7	10	10
79	0.6	6	7
80	0.2	4	6
81	0.2	4	6
82	0.2	4	6
83	0.5	10	10
84	0.3	6	8
85	0.2	4	6
86	0.5	10	8
87	0.8	10	8
88	0.9	16	16

SERVICES-POTABLE WATER				
No	Surface RL	Approx Depth	Service RL	Quality
1	14.02	1.00	13.02	B
2	14.01	1.00	13.01	B
3	14.09	1.10	12.99	B
4	13.93	1.40	12.53	B
5	13.99	1.60	12.39	B
6	14.12	1.50	12.62	B
7	14.08	1.10	12.98	B
8	14.16	0.90	13.26	B
9	14.19			B
10	14.21	1.00	13.21	B
11	14.09	1.00	13.09	B
12	14.14	1.20	12.94	B
13	14.35	0.80	13.55	B
14	14.37	0.65	13.72	B
15	14.57	1.00	13.57	B
16	14.57	1.10	13.47	B
17	14.50	1.00	13.50	B
18	14.67	1.30	13.37	B
19	14.75	1.50	13.25	B
20	14.73	1.60	13.13	B
21	14.73			B
22	14.64	1.20	13.44	B
23	14.57	1.10	13.47	B
24	14.51	0.95	13.56	B
25	14.48	1.00	13.48	B
26	14.33	0.90	13.43	B
27	14.08	0.65	13.43	B
28	13.81	0.75	13.06	B
29	13.66	0.65	13.01	B
30	14.18			B
31	14.04	0.30	13.74	B
32	14.22			B
33	14.13	1.40	12.73	B
34	13.84	0.60	13.24	B
35	13.63	0.65	12.98	B
36	13.62	0.65	12.97	B
37	13.57	0.90	12.67	B
38	13.42	0.95	12.47	B
39	13.37			B
40	13.34			B
41	13.20	1.30	11.90	B
42	13.42			B
43	13.46	1.40	12.06	B
44	13.51	1.20	12.31	B
45	13.87	1.10	12.77	B
46	14.25	1.10	13.15	B
47	14.50	1.60	12.90	B
48	14.88	1.50	13.38	B
49	15.09			B
50	15.19	1.00	14.19	B
51	15.41	0.60	14.81	B
52	15.64	0.60	15.04	B
53	15.75	0.80	14.95	B
54	15.83	0.80	15.03	B
55	14.46			B
56	14.34	1.00	13.34	B
57	14.37	0.85	13.52	B
58	14.41	0.55	13.86	B

SERVICES-SEWER				
No	Surface RL	Approx Depth	Service RL	Quality
59	13.41	0.65	12.76	B
60	13.17	0.45	12.72	B
61	13.29			B
62	13.55			B
63	14.17			B
64	14.52	0.65	13.87	B
65	14.44	0.60	13.84	B
66	14.19	0.55	13.64	B
67	14.18			B
68	14.05	0.70	13.35	B
69	14.00	0.70	13.30	B
70	14.07			B
71	14.22	0.40	13.82	B
72	14.25			B
73	13.97			B
74	13.48			B
75	14.74			B
76	13.28	1.90	11.38	B
77	13.35	2.00	11.35	B
78	13.48	1.80	11.68	B
79	13.47			B
80	13.59	2.00	11.59	B
81	13.70	2.00	11.70	B
82	13.80	2.00	11.80	B
83	14.02	1.70	12.32	B
84	14.09	1.50	12.59	B
85	14.31	1.60	12.71	B
86	14.42	1.70	12.72	B
87	14.61			B
88	14.81	1.90	12.91	B
89	15.01	1.40	13.61	B
90	15.14	1.20	13.94	B
91	15.36	1.10	14.26	B
92	15.54	1.00	14.54	B
93	15.63	0.90	14.73	B
94	15.78	0.90	14.88	B

**WARNING**

ALL SERVICE LEVELS ARE OBVERT LEVELS WITH THE EXCEPTION OF SEWER AND DRAINAGE.

FOR PIPE SIZE REFER TO DBYD PLANS OR AS NOTED WHERE PIPE SIZING AND LEVELS ARE CRITICAL TO DESIGN POTHOLING SHOULD BE UNDERTAKEN.

SERVICES-COMMUNICATIONS				
No	Surface RL	Approx Depth	Service RL	Quality
98	13.52			B
99	13.55			B
100	13.61			B
101	13.69	0.85	12.84	B
102	13.90	0.50	13.40	B
103	14.04	0.60	13.44	B
104	14.33	0.70	13.63	B
105	14.39	0.60	13.79	B
106	14.38	0.60	13.78	B
107	14.38	0.40	13.98	B
108	14.48	0.45	14.03	B
109	14.34	0.40	13.94	B
110	14.34	0.35	13.99	B
111	14.40	0.35	14.05	B
112	14.49	0.30	14.19	B
113	14.40	0.40	14.00	B
114	14.40	0.35	14.05	B
115	14.26	0.40	13.86	B
116	14.27	0.45	13.82	B
117	14.36	0.65	13.71	B
118	14.40	0.60	13.80	B
119	14.30	0.60	13.70	B
120	14.14	0.50	13.64	B
121	14.10	0.55	13.55	B
122	14.00	0.85	13.15	B
123	14.08			B
124	13.92	0.65	13.27	B
125	13.91	0.60	13.31	B
126	13.96			B
127	13.94	1.20	12.74	B
128	13.84	1.20	12.64	B
129	14.06	0.70	13.36	B
130	13.97	0.60	13.37	B
131	14.05			B
132	14.04			B
133	14.00			B
134	14.08	0.80	13.28	B
135	14.04	0.60	13.44	B
136	14.14	0.60	13.54	B
137	14.19	0.70	13.49	B
138	14.06	0.50	13.56	B
139	14.09	0.40	13.69	B
140	14.28	0.75	13.53	B
141	14.31	0.65	13.66	B
142	14.32			B
143	14.52	0.70	13.82	B
144	14.55	0.80	13.75	B
145	14.43	0.70	13.73	B
146	14.50			B
147	14.45			B
148	14.57	0.70	13.87	B
149	14.71	0.50	14.21	B
150	14.63	0.50	14.13	B
151	14.64	0.45	14.19	B
152	14.64	0.45	14.19	B
153	14.52	0.50	14.02	B
154	14.47	0.45	14.02	B
155	14.41	0.50	13.91	B
156	14.32	0.40	13.92	B
157	14.06	0.40	13.66	B
158	13.78	0.30	13.48	B
159	13.55	0.40	13.15	B
160	13.41	0.40	13.01	B
161	13.36			B
162	13.32	0.30	13.02	B
163	13.27			B

SERVICES-COMMUNICATIONS				
No	Surface RL	Approx Depth	Service RL	Quality
164	13.38			B
165	13.41			B
166	13.41	0.40	13.01	B
167	13.53	0.40	13.13	B
168	13.78	0.30	13.38	B
169	14.05	0.40	13.65	B
170	14.30	0.60	13.70	B
171	14.40	0.60	13.80	B
172	14.46	1.00	13.46	B
173	14.50	0.65	13.85	B
174	14.63	0.75	13.88	B
175	14.62	0.95	13.67	B
176	14.69	0.95	13.74	B
177	14.53	0.65	13.88	B
178	14.47			B
179	14.55	0.80	13.75	B
180	14.48	0.70	13.78	B
181	14.30			B
182	13.31	0.50	12.81	B
183	13.35	0.40	12.95	B
184	15.29	0.70	14.59	B
185	15.07	0.60	14.47	B
186	14.85	0.80	14.05	B
187	14.64	0.80	13.84	B
188	14.43	0.70	13.73	B
189	14.33	0.70	13.63	B
190	14.02	0.85	13.17	B
191	13.87	0.70	13.17	B
192	13.68	0.80	12.88	B
193	13.37	0.50	12.87	B
194	13.48	0.55	12.93	B
195	13.58	0.65	12.93	B
196	13.88	0.65	13.23	B
197	14.24	0.70	13.54	B
198	14.50	0.65	13.85	B
199	14.89	0.60	14.29	B
200	15.10	0.65	14.45	B
201	15.24	0.90	14.34	B
202	15.42	0.75	14.67	B
203	15.56	0.40	15.16	B</